



# Advisory Board Regular Meeting Superintendent's Report

*Tuesday, November 22, 2022*

A yellow pencil with a red eraser and a grey band, pointing to the right. The word "Agenda" is written in black text on the yellow body of the pencil.

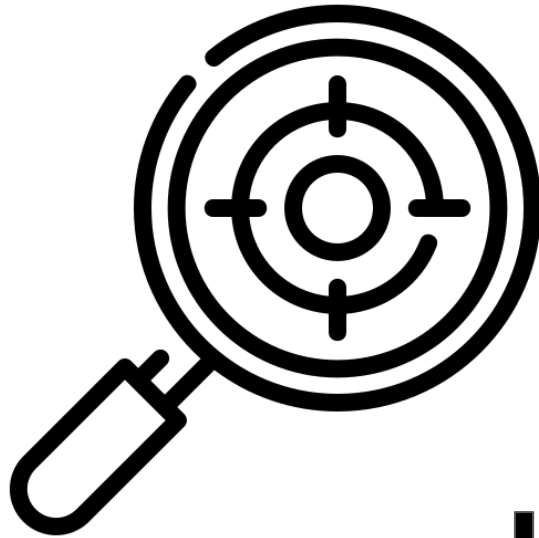
# Agenda

## District Updates

- November Focus Topics
  - ◆ Edgenuity
  - ◆ Delayed Start Wednesdays
- Updates
  - ◆ Teaching & Learning

## District Highlights

## District Upcoming Events



# November Focus



## On-Demand Tutoring

Provide on-demand tutoring support to students using Instructional Services

- Quickly connect with a live concept coach from within a lesson.
- Available alongside Core Courses 3-12, French and Spanish courses 6-12.

HOURS
Mon-Fri: 8am – 10pm EST
Sat: 9am–7:30pm EST
Sun: 6:30pm–10:30pm EST

# Instructional Layers of Support

### VIRTUAL INSTRUCTOR

Serves as the state-certified, highly qualified teacher for a group of students, and uses real-time data to inform frequent communications with students, parents, and facilitators, thus ensuring appropriate individualized instruction for differentiated learning styles.



### SPECIAL EDUCATION COORDINATOR

Provides an additional layer of support to teachers and schools offering online courses to students who have an IEP or 504 plan, or are homebound. Our Special Education Coordinators also provide academic support to these students.



### CURRICULUM

Presents engaging, state standards-aligned content that can be customized to meet the unique needs of a diverse student population. It is delivered through a combination of teacher-led videos, interactive media, and text to promote a varied approach to learning that addresses multiple learning modalities.



### ON-SITE MENTOR

Supervises and monitors students while also hosting regular "big idea" web sessions and serving as escalation manager when students, parents, and facilitators have questions or concerns.



### SUCCESS COACH

Offers on-site mentors support, basic training, and strategies for student success and academic achievement. Success coaches also collaborate with on-site mentors to devise engagement plans for groups of students who may be struggling.



### CONCEPT COACH

Delivers real-time, on-demand, one-on-one tutoring in secondary core subject areas. Concept coaches are available six days a week any time students need help.





No Delayed Wednesdays

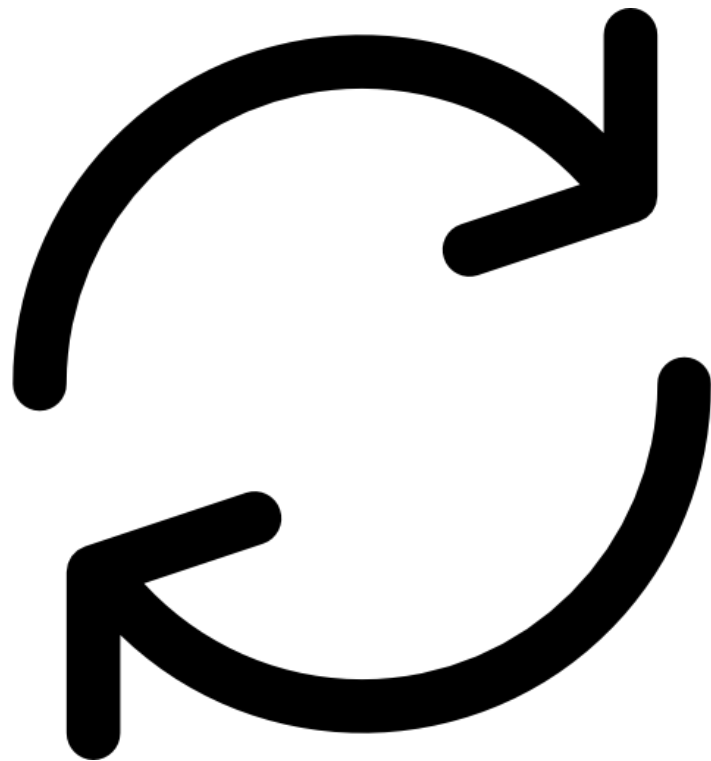
## Regular Start Time

8:40 a.m.

All Elementary, Family, and Middle Schools

9:00 a.m.

All High Schools



UPDATES

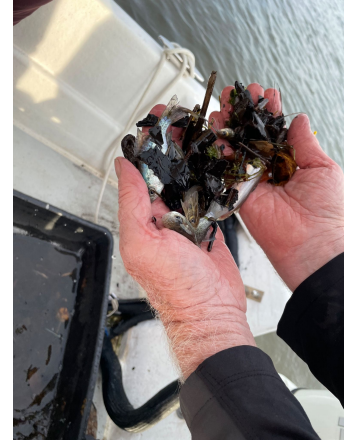
# District Updates: Teaching & Learning

## Curriculum Associates Mid-Atlantic Leadership Symposium



## District Updates: Teaching & Learning

### Upstream Alliance Teacher Excursions





# Highlights

# District Highlight: NJEA Camden County ESP of the Year



## NJEA CAMDEN COUNTY ESP OF THE YEAR

**PAM CLARK**

**Congratulations!**



# District Highlight: College Bound Camden



# District Highlight: Clean-up at Camden High Football Field



# District Highlight: 2022 Sustainability Makes \$ense Award



Camden Big Picture Learning Academy



Camden High



Cooper's Poynt Family School



Creative Arts High School



Davis Family School



Dudley Family School



Martha Wilson Early Childhood Center



Forest Hill Elementary School



Morgan Village Middle School



Catto Family School



PRIDE Academy  
(formerly)



Riletta Cream Early Childhood Center

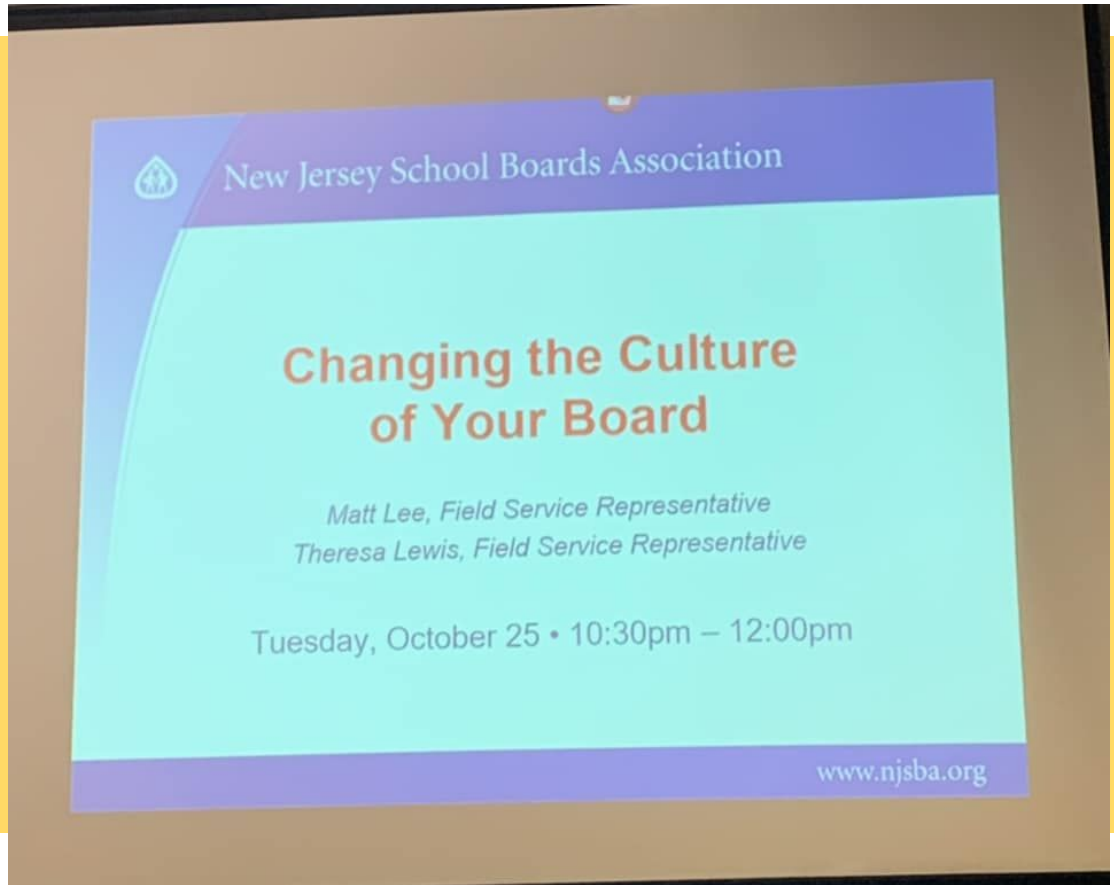


Woodrow Wilson/Eastside High



Yorkship Elementary

# District Highlight: Changing the Culture of Your Board



## District Highlight: Eastside High Invincible Tiger



# District Highlight: Eastside High \$49M Investment



# District Highlight: 2022 Pinnacle Educator Award



# District Highlight: District College and Career Fair



# District Highlights - Congratulations Camden High - Group 3 Central Sectional





# Upcoming Events

SAVE THE DATE

# HAPPY thanksgiving



# CCSD Advisory Board Meeting



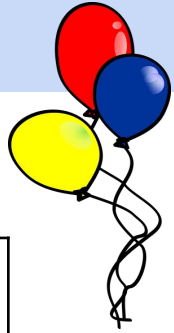
**NEXT MEETING**

*December 20, 2022*

*Location: Dudley School*

# Congratulations on your retirement!

## Retirements



Name	Position	Years of Service
Crystal Wyatt	Paraprofessional	25 years
Dawn Johnson	Math Teacher	25 years
Roseanna Hunter	Special Education Teacher	14 years
Wanda Patrick	Paraprofessional	34 years