



Preschool Social Workers (PSW)

Our goal is to meet the needs of in-district children and families as it relates to the well-being of the child within the school setting—aimed at improving both the educational and social quality of life. We empower families through community resources and workshops driven by a *Family Resource Survey (FRS)*, whereas families are able to choose from a selection of topics that meet their specific interest; **FRS** are distributed and collected in September. **Preschool Social Workers** foster relationships between the home, school, and community.

Collaboration /team building is another important role of the **PSW**. We work closely with our Community & Parent Involvement Specialist (CPIS), Preschool Intervention and Referral Team Specialists (PIRT), Educational Program Specialist (EPS), Leadership Team (LT), teachers, and other school staff and community agencies. Our combined efforts support recruitment and outreach, enrollment, transitioning to kindergarten and much more; all of which help facilitate a high-quality, Early Childhood Program.

Educating Children and Families is Our First Priority

Bridging the Gap...

Camden City School District

Acting Superintendent

Katrina McCombs

Director of Early Childhood

Markeeta Nesmith

Lead Educators

Barbara Alley-Capra

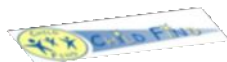
Medinah Dyer

Supervisor

Nichole DeSesso

Community & Parent Involvement Specialist

Tanya Gillespie-Lambert



If parents are concerned that their preschool child is developing or learning differently, they can call and request an evaluation for Preschool Special Education and Related Services at:
888-653-4463 (birth-age three) or
856-966-4171 (ages three-five).

You can also contact your child's neighborhood school.

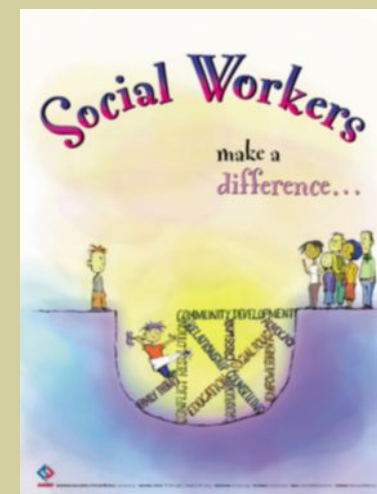


Camden City School District

Preschool Social Workers

The Link Between...

Home, School,
Community and Families



Office of Early Childhood
1033 Cambridge Street
Camden, NJ 08105
Phone: (856)966-2342
Fax: (856) 536-3479

Social Worker Services

- **Family Assessment**

Meet with you to help you problem solve a variety of your needs.

- **Family Support / Advocacy**

Acknowledgement of personal concerns and being available to assist as best we can.

- **Community Resource Referrals**

Connecting you and your family to the right agency/ organization.

- **Parent Workshops**

Advertised year-round through flyers sent home with students. We focus on child development, parental empowerment, behavior, health and nutrition, community resources & more...

- **School Mediation**

Attend meetings with you and other members of the school community.

Contact Information and Schools

Patricia Nelson

Phone: 856-966-2000 Ext. 38315

Email: pnelson@camden.k12.nj.us

*ECDC (SPED) * H.B. Wilson *Sharp
*Veterans Memorial

Tracy Olivera-Lynch

Phone: 856-966-2000 Ext. 38320

Email: toliveralynch@camden.k12.nj.us

*Catto *Cooper's Poynt *Yorkship *Wiggins

Kay Soltero

Phone: 856-966-4171 Ext. 14191 (ECDC)

Phone: 856-966-2000 Ext. 38305 (CCSD Main Office) Email: ksoltero@camden.k12.nj.us

*Early Childhood Development Center (ECDC)

Rosita Vargas-Corbin

Phone: 856-966-2000 Ext. 38344

Email: rvargas@camden.k12.nj.us

*Bonsall Annex *Cramer *Cream *Davis
*Dudley

Frequently Asked Questions

How can social workers help my family?

Social workers can help by discussing various options available to help address your family's particular need by connecting you to the right program or service.

What types of services are available?

Referrals are made for community resources and supports such as counseling, housing, health and safety, etc. In addition, family workshops are offered during the school year in the areas of:

Child Development

Positive Discipline

Getting Ready for Kindergarten

LIHEAP/Energy Assistance

Health & Nutrition and more...

Can I call the social worker directly?

Social workers may be contacted directly using the information provided in this brochure.

Are conferences and discussions confidential?

Information shared is confidential unless there is a potential risk of harm or danger.